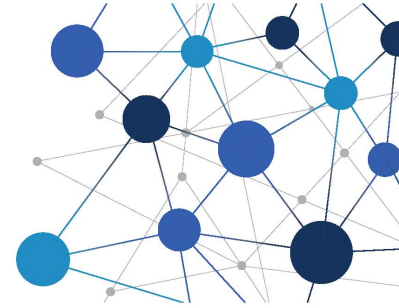


Workforce Connections

Your monthly digest of resources, events, and all things Workforce Development in Lancaster County



February 11, 2021 | Issue XXX

In the News...

[Just Released: January 2021 Lancaster County Workforce Profile](#)

[Lancaster County Workforce Development Board awarded \\$150,000 to expand Career Ready Lancaster!](#)

[Future Of Work: The 5 Biggest Workplace Trends In 2022](#)

[Pennsylvania governor announces \\$1.7 billion pandemic recovery plan](#)

[Pa. hospitals to get millions in federal relief to help hire, keep nurses](#)



Never miss an opportunity to apply for funding through the Lancaster County Workforce Development Board! By signing up [here](#), you will be notified any time Requests for Proposals (RFP's) are released.



Career Ready Lancaster! seeks proposals for 3-Year Strategic Planning

Career Ready Lancaster! (CRL!) the business-education partnership convened by the Lancaster County Workforce Development Board, is seeking an experienced professional to assist the CRL! Steering Committee develop and implement a 3-Year Strategic Plan. Proposals are due March 11, 2022

Submit Request for Proposal

Career Ready Lancaster! presents at

PACTA Conference

Kimberley Patrick and Dr. Stuart Savin presented a workshop on behalf of [Career Ready Lancaster!](#) at the 31st annual PACTA Symposium titled: **Pathways to Career Readiness: An Education and Workforce Development Symposium**. The symposium attracts CTE and Workforce Development Professionals around the state. The conference was held February 10th at the Hershey Lodge and Convention Center.



LCWDB staff member, board member, successfully complete Workforce Fellowship



POLICY & ADVOCACY

FELLOWSHIP PROGRAM

Congratulations to staff member [Anna Ramos](#) and LCWDB Board of Directors member [Marlyn Barbosa](#) on their graduation of PWDA's inaugural Policy and Advocacy Fellowship. The Pennsylvania Workforce Development Association (PWDA) launched its Policy & Advocacy Fellowship Program (PAFP) in 2021 to raise the collective capacity of its members to engage in workforce development advocacy at the federal, state, county, and local level. Selected Fellows received intensive training on the federal and state legislative, administrative, and appropriations processes, and tangible experiences in developing and utilizing advocacy strategies. Meet all the Fellows in this [video](#).



A banner for CTE Month 2022. On the left is the CTE Month logo with the text "CELEBRATE TODAY, OWN TOMORROW!". In the center, it says "Celebrate CTE MONTH® 2022!". On the right, it says "Generously sponsored by" above the ACTE and NAHB logos. The background is a light blue geometric pattern.

What can I do to celebrate CTE Month?



What is CTE?

Career and technical education, or CTE, is education that directly prepares students for high-wage, high-demand careers. CTE covers many different fields, including health care, information technology, advanced manufacturing, hospitality and management and many more, as described in ACTE's [What is CTE?](#) page and [Sector Sheets](#). CTE encompasses many different types of education, from classroom learning to certification programs to work-based learning opportunities outside the classroom.

- Participate in the [CTE Month-NASA HUNCH Student Video Challenge: How Can Space Exploration Solve Climate Change?](#)
- Host a **school visit** and invite members of your local community to learn about your school's strong CTE programs firsthand
- Partner with [Career Ready Lancaster!](#) to have *direct* impact on the future of our workforce
- Engage your **policymakers and the media** to encourage them to attend events and tell your CTE story, or use **social media** to do the same
- Work with **business and industry leaders** to ensure they understand the role CTE plays in readying their future workforce
- Download our **CTE Month logo** for use with any print or digital outreach

Octorara celebrates #CTEMonth and highlights Career and Technical Education Programs

Check out the Octorara Area Career and Technical Education Programs (OACTEP) [Winter Newsletter](#) to learn more about their programs and student successes.



Celebrate #CTEMonth with Edge Factor!

Edge Factor provides FREE toolkits for schools, companies, families, and workforce leaders to share career exploration media and host live or virtual events. The Future Skills toolkit is available through February 28th.

[Register for Future Skills Toolkit](#)

The Future Skills Toolkit includes 5 days of FREE Edge Factor Media!

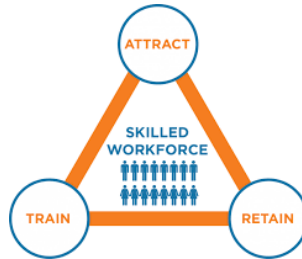
- An inspirational Keynote from Edge Factor President and Founder Jeremy Bout
- "How To" guides for schools, companies, and workforce leaders to learn how to host an engaging event.
- 5 Days of career exploration media, including Virtual Workplace Experiences.
- Tools to showcase how STEAM and Soft Skills are used in real-world careers.



Workforce Solutions



Resources for Jobseekers



Resources for Employers



Resources for Students and Educators

Subscribe to [Career Corner](#), a newsletter for job seekers published by PA CareerLink® Lancaster County that includes hot jobs, recruitment events, and more!

Job Fair [February 24th 6pm-8pm](#) at Columbia Borough High School. All are welcome!

INCUMBENT WORKER TRAINING FUNDING AVAILABLE

We are currently accepting applications for [Incumbent Worker Training](#). Employers receive 50%-100% reimbursement for qualified upskilling and layoff aversion.



PA CareerLink Young Adult Program has paid internship opportunities available for those between the ages of 16-24. [Apply today!](#)



Attend the JA Connect Virtual Job Fair featuring 70+ employers in the South Central region. Upcoming dates are March 10th, April 21st, and May 12th. [Register](#) for free access!

The [Inspire](#) platform provides a central hub where students and educators across several districts can interact with local employers in a safe and secure environment. Employers can provide the following experiences

- Job Shadowing
- Career Coach Discussion Boards
- Interview a Professional
- Work-based Learning Experiences
- Company Tours
- Employer Profiles

View the [February Workshop Calendar](#) for PA CareerLink Lancaster County.



WITH:



APRIL 28TH
8:30 AM-1:30 PM
POD 2

Do you know a determined arts student (in either theatre or fine arts)?

Or, maybe, an AP STEM student with an interest in unconventional job opportunities?

What about a dedicated vocational student who excels when thinking outside of the box?

Live Event production is a technical, creative, fast-paced industry, with opportunities for individuals of various education levels. With careers ranging from design to engineering, manufacturing to finance, marketing to management, together, we build and create live experiences for audiences of all types.

Looking for engaged and reliable high school juniors and seniors who are seeking unconventional career paths, to come experience a unique hands-on career day at Rock Lititz and explore the live event industry that exists where technology meets art.

Interested students should submit 1-3 paragraphs on why they would like to attend. Please share with students who would appreciate spending the day with the Rock Lititz Community.

Applications due March 18. Students will be notified April 4.

Lunch will be provided.

www.surveymonkey.com/r/RLititzSTEM | Questions? Contact: education@rocklititz.com

High School Students, sign up [here!](#)



PHEAA is hosting free webinars in February. Register here: pheaa.org/virtual



Customized LMI Request

View Local Labor Market Data

Did you know?

The Lancaster County Workforce Development Board is your *premier* source for Labor Market Information (LMI).

Accurate, objective, relevant, timely, and accessible workforce and labor market information is critical for:

- Building a skilled workforce that spurs business competitiveness and economic growth;
- Strengthening career pathways and guiding skill attainment for good jobs, economic opportunity, and career growth;
- Understanding the rapidly changing nature of work and how it impacts the workforce and U.S. and local economies; and
- Spending workforce training and education funds effectively.

Lancaster Manufacturer's Invest in HAAS CNC Maintenance Consortium Training

Congratulations to the following Lancaster companies who received Incumbent Worker

Training grants through the Lancaster County Workforce Development Board. Companies partnered with the Phillips Corporation to provide hands-on training for their Industrial Maintenance Mechanics. The training helps the companies stay competitive, upskill their workers, and avert layoffs. Incumbent Worker Training grants are available to Lancaster County employers. View the guidelines and application on our [website](#).



Interim Executive Director: [John Moser](#)
Chief Operating Officer: [Anna Ramos](#)
Controller: [John Zander](#)
Director of Compliance and Business Engagement: [Valerie Hatfield](#)
Fiscal Manager: [Anibal Aponte](#)
Strategic Innovation and Communications Manager: [Join our team!](#)
Youth Program Coordinator: [Carissa Pinkard](#)
Workforce Program Coordinator: [Angela Mayo](#)
Administrative Assistant: [Rae Miller](#)

Lancaster County Workforce Development Board |
www.lancastercountywib.com



Equal Opportunity Employer/Program.
Auxiliary aids and services available to those with disabilities upon request.