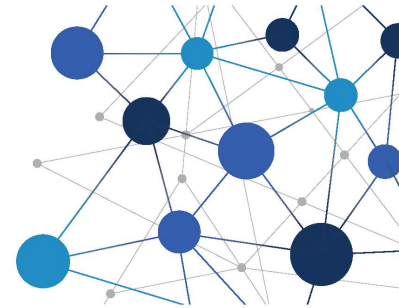


Workforce Connections

*Your monthly digest of resources, events, and all things
Workforce Development in Lancaster County*



October 6, 2021 | Issue XXVII

In the News...

[Just Released: September 2021
Lancaster County Workforce Profile](#)

[Pennsylvania's "Earn While You Learn"
Opportunities](#)

[A Proclamation on National Disability
Employment Awareness Month, 2021](#)

[Lancaster coalition hopes to expand
career knowledge among job seekers
with new tool](#)

[Celebrate Careers in Construction Month](#)

[Office of Equal Opportunity Fall
Newsletter](#)



Never miss an opportunity to apply for funding through the Lancaster County Workforce Development Board! By signing up [here](#), you will be notified any time Requests for Proposals (RFP's) are released.

#MFG Day 2020 - October 8, 2021

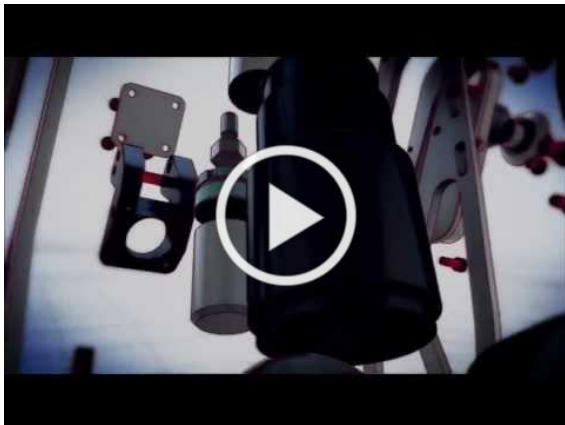
Each year, Manufacturing Day (MFG Day) is held on the first Friday in October in order to show students, parents, and the public what modern manufacturing is all about. The fourth industrial revolution is rapidly changing our world. New advanced manufacturing

technologies bring about whole new careers, requiring a skilled workforce interested in pursuing them. From bioengineers, to data analysts to robotics technicians, and all of the operations in between, there is a place for everyone in manufacturing!

[Read More...](#)



Celebrate Manufacturing Month with Edge Factor



Watch the "Manufacturing Changes Lives" video from Edge Factor

Access my free Edge Factor
Rock MFG Day Experience

Edge Factor's **2021 Rock MFG Day** STEAM experience is available for free through September and October and includes:

- 5 Days of cinematic films, career profiles, soft skills video & STEAM content
- A Keynote Presentation by Edge Factor's Founder Jeremy Bout
- "How to Guides" to help plan, host, & promote your Rock MFG Day event



THURS. OCTOBER 7TH
MANUFACTURING AND CONSTRUCTION JOB FAIR AT CLIPPER MAGAZINE STADIUM
PRESENTED BY TRADITIONS BANK

JOB FAIR BEGINS AT 4:30 PM

Visit with various Manufacturing and Construction companies all in one place and get on the path to your next career!

VS

GAME BEGINS AT 6:30 PM

Each attendee will receive a FREE ticket to attend the Barnstormers game this same evening beginning at 6:30 PM against the Long Island Ducks!

Register to attend: LancasterBarnstormers.Com

The Manufacturing and Construction Job Fair will be held on Thursday, October 7 at Clipper Magazine Stadium. [Register to attend!](https://LancasterBarnstormers.Com)



As an organization, LancasterMakes has a goal of educating students and their families on career paths that may not require a college degree. "The aim of LancasterMakes is to make a difference in the lives of the next generation of the workforce by demonstrating the value and the benefits of a career in manufacturing."

Career Ready Lancaster!: Connections Between School and Work



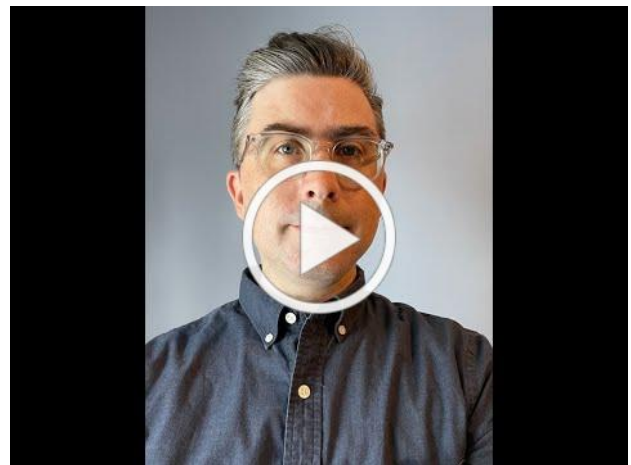
One of the goals of **Career Ready Lancaster!** is to highlight successful local business education partnerships and to encourage businesses to get involved in their local schools. In this video, a Senior HR Manager, and a Lancaster Superintendent talk about why business and education working closely together is important and impactful.

Share *your* Career Journey on Career Ready Lancaster!

One of the things we all know about careers is it's never a straight path -- for many of us, it's often more like a roundabout path with twists and turns. Some may even describe it as a bowl of spaghetti! CRL! is seeking people to share a 2-3 minute self-recorded career story to be shared on the CRL! website. Send your video and contact information to: **[Kimberley Patrick](#)**, CRL! Coordinator.

Here's some questions to answer to get you started:

1. What kind of education or training did you pursue in preparation for your career?
2. Did you have any summer jobs or internships?
3. How many jobs did you have before you got this one?
4. What do you love about your career journey?
5. What would you tell your former self now if you could go back in time regarding your career?



Chris Breimhurst of Pennant Creatives explains his very windy career journey, and has no regrets!



Workforce Solutions



Resources for Jobseekers

Subscribe to [Career Corner](#), a newsletter for job seekers published by PA CareerLink® Lancaster County that includes hot jobs, recruitment events, and more!

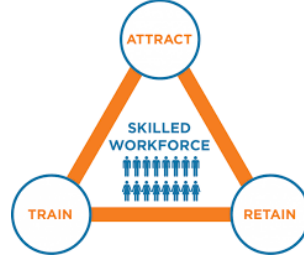


IU13 will be leading an [Administrative Support Professional training](#). The class will run from Oct 11 - Nov 18. Contact [Marilyn Lydic](#) for more information.

Looking for GED/High School Equivalency prep classes? Check out [IU13's class schedule!](#)



Stay on top of available workshops and recruitment events at [PA CareerLink Lancaster County](#). Normal operating hours are Monday-Friday 8:30am-5pm. [October Calendar of Events!](#)



Resources for Employers



Bridging the Opportunity and Skills Gap
[Lancaster County SHRM](#) is hosting a TWO PART breakfast meeting series for their first IN-PERSON event! *You've heard of the skills gap, but what about the opportunity gap? And what does the intersection of the two mean for your workforce development? Join the DE&I and Workforce Readiness Committees for this enlightening series!*
October 12th and November 9th at Farm & Home Center
7:30am - 9:00am
[Register Today!](#)

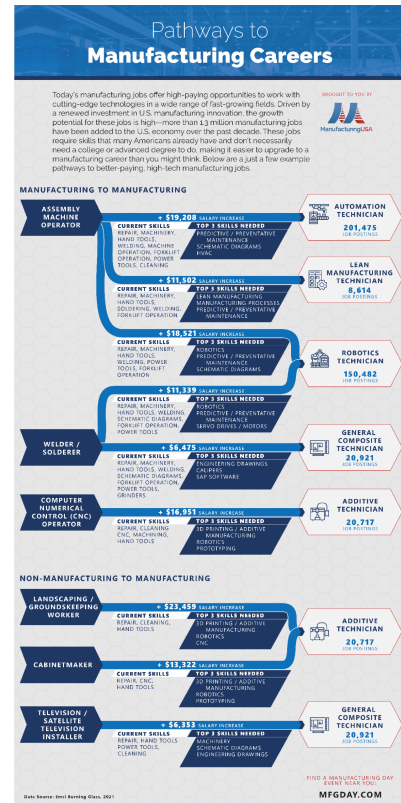
INCUMBENT WORKER TRAINING FUNDING AVAILABLE

We are currently accepting applications for [Incumbent Worker Training](#). Employers receive 50%-90% reimbursement for qualified upskilling!



Resources for Students and Educators

Discover exciting [career pathways](#) in Manufacturing.



Are you between 16-24 years old? Join the [PA CareerLink Young Adult Program!](#) Get personalized career navigation, help paying for training, earn incentives, or start a paid internship!



Young Adult Career



This November, the Lancaster County Workforce Development Board and PA CareerLink Lancaster County will be moving to 1046 Manheim Pike. Be on the lookout for an open house!

Be more efficient by using **SkillUP for Business** to create customized new hire training, assess candidates with Kinexa Prove It tests, and upskill your current workers for a fraction of the cost of post-secondary institutions.

Readiness Workshop

Liz explains resumes, cover letters, how to ace an interview, and why following up with an employer is critical in this young adult career readiness workshop



[Customized LMI Request](#)

[View Local Labor Market Data](#)

Did you know?

The Lancaster County Workforce Development Board is your *premier* source for Labor Market Information (LMI).

Accurate, objective, relevant, timely, and accessible workforce and labor market information is critical for:

- Building a skilled workforce that spurs business competitiveness and economic growth;
- Strengthening career pathways and guiding skill attainment for good jobs, economic opportunity, and career growth;
- Understanding the rapidly changing nature of work and how it impacts the workforce and U.S. and local economies; and
- Spending workforce training and education funds effectively.

Meet Our New Team Members

Meet John!

Our team is excited to welcome **John Zander** as our Controller!

Outside of work, John enjoys spending time with his wife and their two children. John is an avid Philadelphia Phillies and Green Bay Packers fan, and has been on the same softball team for 30 years, winning two state championships! Welcome to the team, John!



Meet Angela!



[Angela Mayo](#) joins our team after working with the WIOA Adult and Dislocated Worker program at PA CareerLink Lancaster County for just over five years. She earned her Bachelors in Journalism, and she is currently working on earning her Masters in Human Resources Management, both from Temple University. We are excited to bring Angela on as our Workforce Program Coordinator!

LCWDB Staff Making a Difference in the Community



Congratulations to [Valerie Hatfield](#) for being nominated as one of [NAWB's](#) Workforce Heroes in September! In her nomination, [Cathy Rychalsky](#) wrote, "With a laser focus on ensuring quality services, she has been instrumental in providing critical information and data related to labor markets and skills gap throughout the workforce system."

MANHEIM TOWNSHIP EDUCATIONAL FOUNDATION
Education Forecast Breakfast
 November 5, 2021 / 7:00am - 9:50am / Lancaster Country Club
(Event back up date: April 13, 2022)

Keynote Presenter and Panelists

- Pedro Rivera** - President, Thaddeus Stevens College of Technology
- Stacie Blake** - Chief Executive Officer, WCA
- Anna Ramos** - Chief Operating Officer, Lancaster County Workforce Development Board
- Christian Recknagel** - Chief Culture Officer, TAIT
- Elizabeth Ziegler** - College and Career Counselor, MTSD

Pathways to Meaningful Careers
Preparing for the Next Generation of Innovators

Join business and community leaders at the 8th annual Education Forecast Breakfast to hear about how local schools and businesses are preparing for the next generation of innovators.

Keynote speaker Pedro Rivera and our panelists will discuss what graduates are looking for in corporate culture, and best practices from the perspective of educators, parents, and businesses.

The Education Forecast Breakfast exists to highlight exciting trends in education, connect with the business community, and act as a fundraiser for the Manheim Township Educational Foundation. Funds raised from this event are used for grants to enhance academic, athletic, and artistic opportunities for all Manheim Township students.

Purchase tickets! Tickets are \$50 each and include breakfast.
 Name/s of Attendees: _____
 # of tickets: _____ Address: _____
 Email: _____ Phone: _____
☐ Sorry I can't attend - Please accept my donation of: _____
 Checks payable to MTEF. Mail completed form to: MTEF 450 A Candlenwick Rd. Lancaster, PA 17601

OR GET YOUR TICKETS ONLINE: MTEF.NET

Questions?
www.mtef.net
info@mtef.net
 717.755.1751

We are excited to share that [Anna Ramos](#) will be a participating as a panelist at the Manheim Township Educational Foundation's Education Forecast Breakfast in November!

Cathy's Corner

A note from the desk of the Executive Director of the Workforce Development Board

Colleagues and friends,

Fall has always been a time of transition for me. This year, I find myself reflecting on the strength and resilience of our team, Board of Directors, State representatives, CareerLink partners and team, employers, jobseekers, and Elected Officials. Throughout the pandemic, we have faced monumental challenges that have demanded more of each of us. The disruptions, disappointments, and loss glare directly in our face, yet in true Lancaster County fashion, we refuse to quit!

The world of work looks significantly different, and it is incumbent upon



us to ensure that all stakeholders adapt as quickly as possible. This demands incredible tenacity as we provide critical, real-time data to help inform the community of the complexity of today's labor market.

The Team and Board of Directors of the Lancaster County Workforce Development Board are committed to cultivating and growing an innovative and inclusive workforce system and invite you to join us. To find out how you can be part of our efforts, or one of the many great initiatives throughout Lancaster County, please contact us today!

Best,
Cathy

Contact Us



Executive Director: [Cathy Rychalsky](#)

Chief Operating Officer: [Anna Ramos](#)

Controller: [John Zander](#)

Director of Compliance and Business: [Valerie Hatfield](#)

Fiscal Manager: [Anibal Aponte](#)

Strategic Innovation and Communications Manager: [Join our team!](#)

Youth Program Coordinator: [Carissa Pinkard](#)

Workforce Program Coordinator: [Angela Mayo](#)

Administrative Assistant: [Rae Miller](#)

Lancaster County Workforce Development Board |
www.lancastercountywib.com



Equal Opportunity Employer/Program.
Auxiliary aids and services available to those with disabilities upon request.