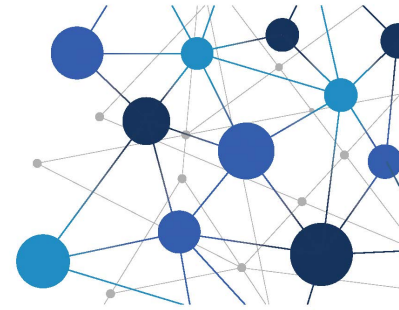


# Workforce Connections

Your monthly digest of resources, events, and all things Workforce Development in Lancaster County



May 28, 2021 | Issue XXIII

## In the News...

[Governor Wolf: \\$2.8 Million Investment to Prepare Students for Good Jobs](#)

[Reminder: L&I Transitioning To New Unemployment Compensation System June 8](#)

[Lancaster County Workforce Development Board launches new website](#)

[Extended unemployment benefits end in Pennsylvania](#)

[Pennsylvania to resume work search requirement for jobless benefits](#)



Judy Wechter of PA CareerLink® Lancaster County wants you to know they are your "one-stop resource when it comes to addressing employment and workforce needs". Video courtesy of [United Way of](#)



Never miss an opportunity to apply for funding through the Lancaster County Workforce Development Board! By signing up [here](#), you will be notified any time Requests for Proposals (RFP's) are released.

## COVID-19 RESOURCES

- Pennsylvanians over 12 years of age are eligible for a COVID-19 vaccine. [Find an appointment near you.](#)
- Uber and Lyft are offering [free rides to vaccination sites](#) until July 4.
- Find [food assistance resources near you.](#)
- [Mental health and substance use disorder help](#) is available.
- If you are unable to work due to COVID-19, you may be eligible for [unemployment benefits.](#)

**INCUMBENT WORKER TRAINING  
FUNDING AVAILABLE**

Attention employers! IWT grants reimburse eligible training expenses anywhere from 50-90% depending on company size. Skill up your current workforce with [Incumbent](#)

## LCWDB trains workforce intermediaries to assist employers develop Registered Apprenticeships

Secured by the Lancaster County Workforce Development Board in 2019, a State Apprenticeship Expansion grant is supporting 5 local workforce intermediaries by training them as Registered Apprenticeship Navigators. The unique twist about this program is that the training itself is a Registered Apprenticeship, and the Apprentices are completing technical instruction combined with on-the-job learning and mentorship in this competency-based learning model. Learn more about the [RA Navigator Apprenticeship](#) sponsored by [Keystone Development Partnership](#).



Najla Speichart, PA CareerLink®



Nick Landis, HACC

Are Apprenticeships right for my company? Request an RA Navigator!



Val Hatfield, LCWDB



Trevor Smith, PA CareerLink®

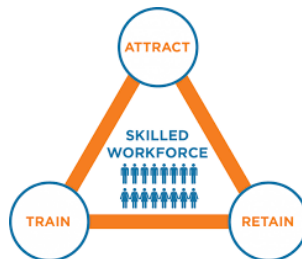


Tyrone Miller, Lancaster Works

## Workforce Solutions



Services for Jobseekers



Services for Employers



Services for Educators/Students

Subscribe to [Career Corner](#), a newsletter for job seekers published by PA CareerLink® Lancaster County that includes hot jobs, recruitment events, and more!

June 7th-11th: [YWCA Lancaster's New Choices Career Development Program](#) is a life-changing opportunity for Lancaster individuals in transition to achieve economic self-sufficiency through personal development, career guidance, and job training. [Register today!](#)

The Emergency Broadband Benefit Program is a [Federal Communications Commission \(FCC\)](#) program that provides a temporary discount on monthly broadband bills for qualifying low-income households.

Apply for Emergency Broadband Benefits now

*Opportunity at work but you don't have the right skills or credential?*

[SkillUp Lancaster](#) offers **FREE Industry Certification Tracks** that are designed to prepare you for a certification credential training including: [CompTIA](#), [Cisco](#), [Microsoft](#), [Oracle](#), [ASQ \(includes Six Sigma Green Belt, Black Belt\)](#), [Human Resources Certification Institute \(PHR, SPHR\)](#), [Project Management Institute \(PMP, CAPM\)](#).

\*exam fee is not included

PA CareerLink® Business Services is hosting virtual job fairs **every Thursday in June**. [Register here](#). Space is limited!

[Get Connected](#) with jobseekers. Join PA CareerLink® Lancaster County for a Facebook Live every Monday at 11:00 AM! We are inviting six employers to participate each week to advertise their companies and job openings

PA's New Unemployment Compensation (UC) System will make it **easier** for employers to manage benefits information. [Learn more](#).

Now offering even more ways to connect with jobseekers! The [Lancaster Chamber](#) and [PA CareerLink® Lancaster County](#) are partnering to offer multiple ways advertise your open positions. On **June 15th** employers are invited to participate in **Pop Up Job Fairs** that will be hosted across the county, and on **June 16th** an **in-person event** will be held at Clipper Magazine Stadium. [View Flyer](#).



There's still time to register for [Framing Futures](#), an opportunity for graduating seniors to explore 4 construction careers in 5 weeks (July 5 - August 6).

**CONSTRUCTION CAREERS FRAMING FUTURES**  
High school seniors, jumpstart your career in construction this summer!

Explore 4 construction careers over 5 weeks (July 5-August 6):

- Carpentry Median salary \$40,700
- Construction Electrician Median salary \$31,400
- Masonry Median salary \$48,430
- Plumbing Median salary \$50,800

Drive a forklift • Get OSHA certified • Help build a house • Earn 1 week's pay on job site  
Gain a certificate of completion & admission to Thaddeus Stevens College

**FREE OPPORTUNITY FOR 15 SENIORS\* THIS YEAR ONLY! DON'T WAIT.**  
\*Opportunities are limited to those who qualify. To get detailed info on this quality, reach out to Carissa Pinkard at [cpinkard@lancastercountylink.com](mailto:cpinkard@lancastercountylink.com). Questions? Contact Amy at [amw@stevenscollege.edu](mailto:amw@stevenscollege.edu).

Thaddeus Stevens College of Technology | ECONOMIC GROWTH FUND  
Funded by BB&T New Talent Economic Growth Fund at the Lancaster County Community Foundation.

Don't settle for a dead-end job when you can have a career! The [Young Adult Career Program](#) at PA CareerLink® Lancaster County is currently enrolling 16-24 yr olds (not enrolled in school) who are seeking an awesome career and a personal "career navigator" who is ready to help guide you on your career pathway!

PA CAREERLINK® LANCASTER COUNTY'S [Pennsylvania CareerLink](#)  
**OUT-OF-SCHOOL YOUNG ADULTS PROGRAM**

ARE YOU BETWEEN THE AGES OF 16-24?  
LET US CONNECT YOU TO YOUR FUTURE CAREER!

- SERVICES AVAILABLE:
- ONE-ON-ONE CAREER COACHING
  - GED TESTING
  - ACCESS TO ONLINE COURSES
  - UP TO \$10,000 TOWARDS APPROVED TRAININGS
  - PAID INTERNSHIPS EARNING A MINIMUM OF \$10.35 PER HOUR IN CAREER FIELDS THAT MATCH YOUR INTEREST
  - OPPORTUNITIES TO EARN GIFT CARD INCENTIVES FOR CAREER EXPOSURE ACTIVITIES
  - AND MORE!

GET STARTED TODAY!  
EMAIL: [YOUNGADULTPROGRAM@JOBSLANCASTER.COM](mailto:YOUNGADULTPROGRAM@JOBSLANCASTER.COM) FOR MORE INFORMATION

@PACAREERLINKYA



## Did you know?

The Lancaster County Workforce Development Board is your *premier* source for Labor Market Information



[Customized LMI Request](#)

[View Local Labor Market Data](#)

(LMI).

Accurate, objective, relevant, timely, and accessible workforce and labor market information is critical for:

- Building a skilled workforce that spurs business competitiveness and economic growth;
- Strengthening career pathways and guiding skill attainment for good jobs, economic opportunity, and career growth;
- Understanding the rapidly changing nature of work and how it impacts the workforce and U.S. and local economies; and
- Spending workforce training and education funds effectively.

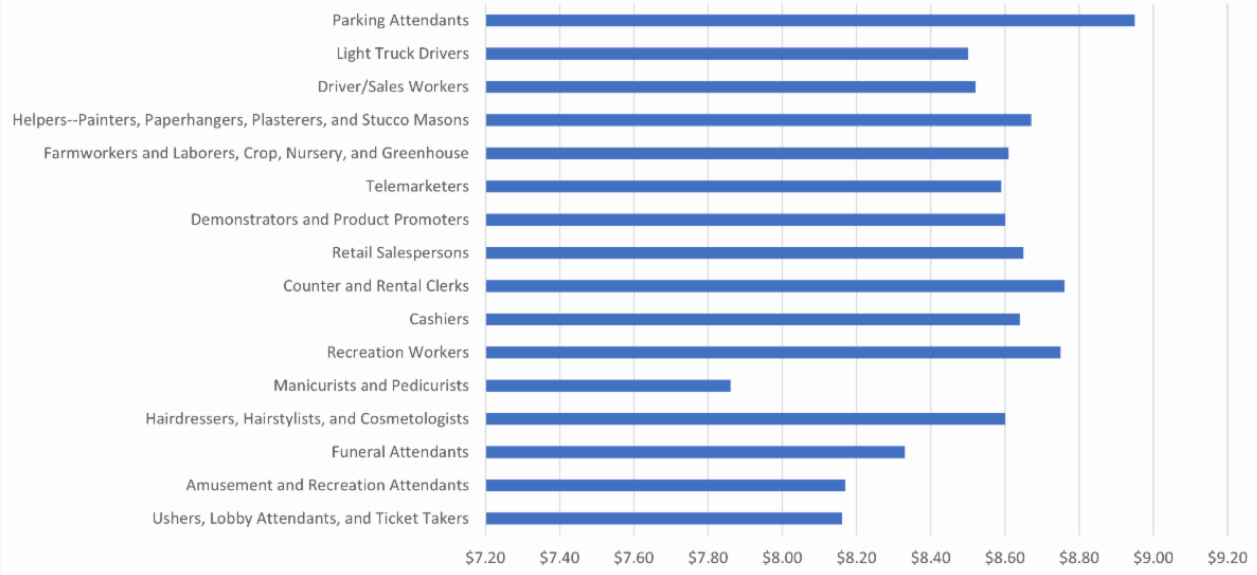
## Pennsylvania Releases 2021 Minimum Wage Report

Pennsylvania last raised its minimum wage on July 24, 2009, from \$7.15 to \$7.25, when the federal minimum wage was increased from \$6.55 to \$7.25. It has remained at \$7.25 since then.

Labor markets in the U.S. and Pennsylvania both deteriorated in response to the pandemic, as employment decreased dramatically. The pandemic-induced decrease in employment and hourly workers was concentrated in lower wage workers which contributed to both the absolute and relative changes in the wage distribution. This had the effect that, statistically, average wages rose as the share of workers earning higher wages (e.g., more than \$15.00) increased, while the share of those at the lower wage end of the distribution fell. Partly as a result, the median wage in Pennsylvania increased from \$15.14 to \$16.50, while it rose from \$15.30 to \$16.32 in the nation.

[Download PA Minimum Wage Report](#)

## Occupations in Lancaster County with Entry Level Wages of less than \$9/hr



### Cathy's Corner

*A note from the desk of the Executive Director of the Workforce Development Board*

While the director is away, the staff will, what is the saying? While Cathy is enjoying a well-deserved break from the office, the LCWDB staff are hard at work making a difference in the community!

We wanted to highlight a recent accomplishment of our own Val Hatfield, graduate of [Leadership Lancaster's](#) Core Class of 2021 - Best Class Ever!



As an organization whose mission is ***characterized by innovative opportunities for job seekers, employers, and community partners to achieve their maximum potential***, we are proud to exercise our mission internally by attracting and keeping an "all star staff", as Cathy would say, and building a company culture that's unafraid of innovation, change, failure and success.

We look forward to [engaging with you](#) in the months ahead encourage you this Memorial Day to remember all those who selflessly gave their lives while serving in the U.S. Military.

Contact Us



Executive Director: [Cathy Rychalsky](#)  
Chief Operating Officer: [Anna Ramos](#)  
Strategic Innovation Officer: [Valerie Hatfield](#)  
Fiscal Manager: [Anibal Aponte](#)  
Quality Assurance Manager: [Jim Black](#)  
Fiscal Analyst: [Rebecca DeWitt](#)  
Administrative Assistant: [Rae Miller](#)  
Business-Education Partnership Intern: [Carissa Pinkard](#)



Equal Opportunity Employer/Program.  
Auxiliary aids and services available to those with disabilities upon request.