

# Workforce Connections

Your weekly digest of resources, events, and all things Workforce Development in Lancaster County



July 2, 2020 | Issue VI

## In the News...

[Trust fund to deliver nearly \\$1M to Lancaster County Schools, Leadership Lancaster \(subscription required\)](#)

[Pa. builds on second-chance reforms for ex-offenders by easing employment barriers](#)

[PA Extends Unemployment Compensation benefits for 13 more weeks](#)

[The future of manufacturing with a digital workforce](#)

[Missed the Webinar? View the Prezi: Incumbent Worker Training for Employers](#)

[In case you missed last week's email!](#)

Follow us on Social Media!



## Receive Notifications about Request for Proposals!

Never miss an opportunity to apply for funds through the Lancaster County Workforce Development Board! By signing up [here](#), you will be notified any time Requests for Proposals (RFP's) are released.

The Path to One Good Job: A collective impact partnership powered by the United Way of Lancaster County



The Path to One Good Job partnership helps individuals earn a credential, land a job or promotion, and continue on a career PATH

United Way of Lancaster County identified four **Bold Goals** in Lancaster County. These goals include:



1. **100%** of our children will enter kindergarten ready to learn
2. **100%** of students and adults will have post-secondary credentials
3. Decrease individuals and families living in poverty by **50%**
4. **100%** of individuals, children and families will have a medical home

*Path to One Good Job Partners include:*

- Lancaster County Workforce Development Board - Lead
- Spanish American Civic Association - Co-lead
- Lancaster Chamber
- Lancaster-Lebanon IU13
- Literacy Council of Lancaster/Lebanon
- Church World Services
- Columbia Life Network
- The Factory Ministries
- Elizabethtown Area HUB
- Lancaster County Career and Technology Center
- Thaddeus Stevens College of Technology
- United Way of Lancaster County

In 2018, the LCWDB and SACA teamed up to submit a grant proposal to address Bold Goals #2 and #3. Upon being the recipient of a 3-Year grant, we formed the partnership called **The Path to One Good Job**.

In year one, this partnership has helped 89 people in Lancaster earn their first credential. As we wrap up year two, which of course was met with many challenges, we are on track to exceed the prior year's graduates.

Lancaster residents, with a specific priority to serve those with barriers to employment, can work with a Career Navigator at one of many locations in the county, to earn a credential at **no-cost**. This grant focuses on training programs less than 2 years, with some being as short as 3 weeks!

The Path to One Good Job  
English Flyer

The Path to One Good Job  
Spanish Flyer

Our partners are specialized to work with those at any point in their career path. Whether they need to obtain a high school equivalency, are seeking to translate foreign credentials, or earn their very first post-secondary certificate, **The Path** is here to help!

Download our flyers to help spread the word!

### Lancaster Residents are "SkillUp"!



SkillUp Lancaster, the FREE E-Learning Catalog of over 4,500 courses has seen a spike in new accounts and course completions since April. Clients logged over 672 hours and completed 782 courses! Popular courses include **Writing Effective Emails, Customer Advocacy: Enhancing the Customer Experience, Interpersonal Communication: Listening Skills, Many Approaches to Workplace Conflict, Microsoft Word and Excel 2019, The Importance of Diversity and the Changing Workplace, Documentation and Criteria Used for Business Analysis** and many more! If your'e seeking to become more marketable in the workplace, [SkillUp Lancaster](#) has what you need! It also offers free prep work for 100+ Industry Certifications

Sign Up for your FREE E-Learning Account Now!



Jill S. Welch, Esquire, is an Employment Law Attorney at Barley Snyder Attorneys at Law. Jill and husband Doug are a family of four, parents to sons Jake and Luke. Five if you count psycho-kitty Storm!

## **Barley Snyder**

---

ATTORNEYS AT LAW

### **Board Member Spotlight**

**A few words from one of our valued board members**

When asked about why she is a board member, Jill indicated that her mentor, David Keller, helped her match her desire to serve the Lancaster community, with her interest in building our workforce and meeting the needs of our area businesses. Each Board Member brings something unique to the table. Jill's contribution as an employment law attorney brings knowledge of the legal aspects of employment and governance, as well as knowledge of the employment needs of businesses in our community.

Here are some fun facts about Jill:

**Q:** What piece of advice were you given that has helped you become successful over the years?

**A:** Integrity - you are only as good as your word.

**Q:** What is something many people don't know about you?

**A:** I hold a second degree (second dan) black belt in Tae Kwon Do

**Q:** What is your favorite book?

**A:** *Mr. God, This is Anna*

**Q:** What is your favorite outdoor activity?

**A:** Playing softball

**Q:** Something you wish more people cared about?

**A:** Preserving the treasures that are our National Parks

### **Lancaster County Workforce Development Board of Directors seeks Small Business representative to fill board vacancy**

Do you have optimal policy making or hiring authority within your company?  
Does your company provide employment opportunities in in-demand industry sectors or occupations?

To learn more about this volunteer opportunity with a great team, please contact [Anna](#) today!



### **Did You Know?**

The Lancaster County Workforce Development Board is your *premier* source for Labor Market Information.

We can provide resources and links for self-service access to local, state, and federal



labor market information, as well as customized reports for your business, at no charge!

To discuss your Labor Market needs, please contact [Valerie Hatfield](#).

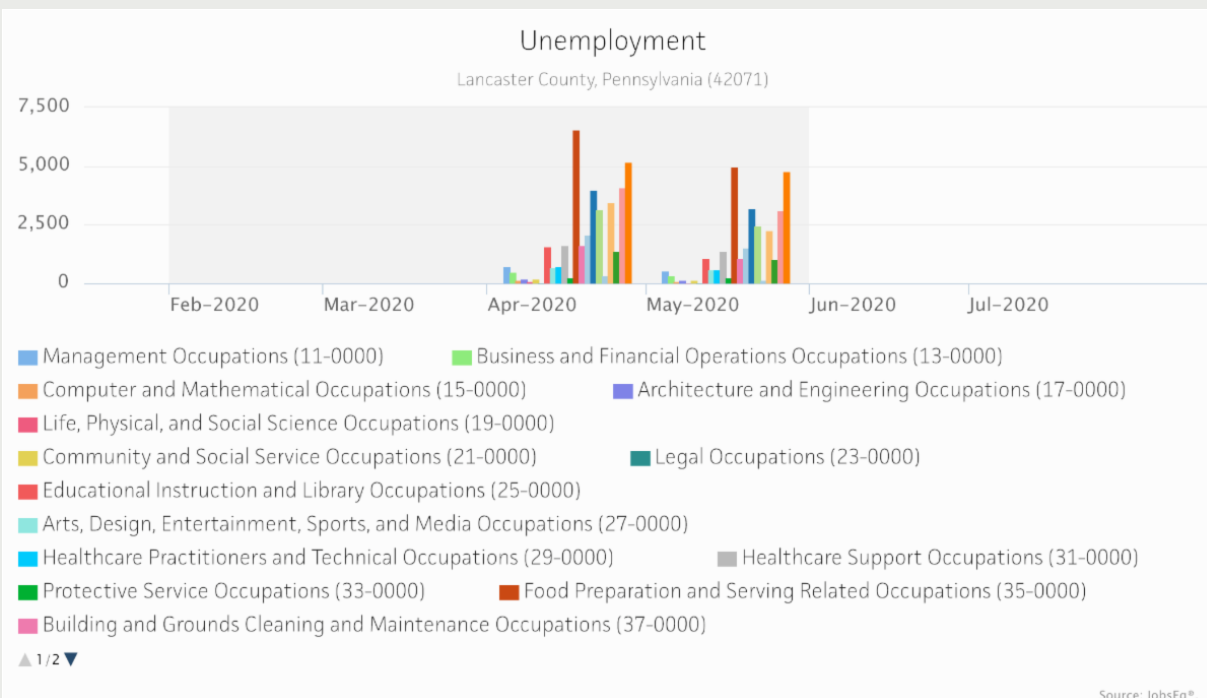
Just Released: Lancaster County May Employment Data

Check out the NEW Weekly Unemployment Claims Interactive Dashboard to see up-to-date local information

## Monthly Unemployment by Occupation in Lancaster County shows which occupations survived Covid-19 the best, which ones struggle to reemerge

*The Lancaster County Workforce Development Board tracks real-time data to help businesses and jobseekers identify "transferrable skills" by assessing occupation data*

Although some industries were affected more than others by Covid-19, we know that people possess skills and certifications specific to an occupation that can help them move between industries. It is important for jobseekers to know what skills are needed, and for businesses to know where to find these candidates. Our **Monthly Unemployment** report is able to track those unemployed by occupation, the percentage of unemployed in that occupation as a whole, and which occupations are returning to work the fastest, slowest, or not at all. If you are a business and are looking for a customized report, please **contact us** to set up a consultation. Whether it is a broad occupation, or a specialized one, we can get you the information you need to be able to make informed decisions. [Download the detailed .xls report](#)

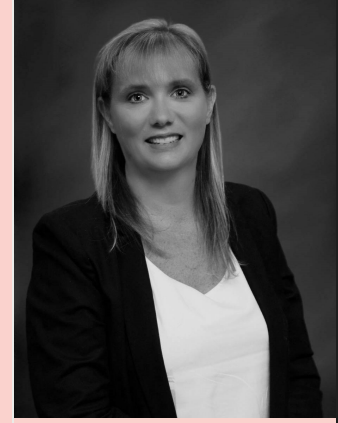


## Board

We want to hear from you! The Lancaster County Workforce System, *your* workforce system, can only be effective with your input. As part of our five-year strategic plan, we prioritize innovative workforce solutions along with fiscal and business integrity. Hearing directly from you helps us make valuable and impactful investments that align with your workforce needs for today and the future. There are many ways to engage with us. You can join one of our committees, become a board member, give input into our [Local Plan](#), be part of an industry advisory committee, become a youth mentor, or just [email](#) us your ideas!

To learn more about our organization or to get involved, please visit our [website](#). To find out more about recovery efforts, please click [here](#).

Cathy



Contact Us



Executive Director: [Cathy Rychalsky](#)

Chief Operating Officer: [Anna Ramos](#)

Strategic Innovation Officer: [Valerie Hatfield](#)

Fiscal Manager: [Anibal Aponte](#)

Quality Assurance Manager: [Jim Black](#)

Administrative Assistant: [Rae Miller](#)

Business-Education Partnership Intern: [Samantha Bretz](#)

Lancaster County Workforce Development Board |  
[www.lancastercountywib.com](http://www.lancastercountywib.com)



Equal Opportunity Employer/Program.

Auxiliary aids and services available to those with disabilities upon request.